

Certificate of Analysis

Anti-Human Interferon Alpha, Clone MMHA-13 (MAb)

Catalog No: 21116-1

Lot No: 7706

Size: 50 µg/vial

Description: Mouse Monoclonal Antibody against Human Interferon Alpha

Clone: MMHA-13

Volume: 0.1 ml

Concentration: 0.5 mg/ml

Buffer: Phosphate-buffered saline (PBS) containing 0.1% bovine serum albumin (BSA)

Endotoxin: < 1 EU/µg

Antigen: Human Leukocyte Interferon

Isotype: Mouse IgG₁ kappa

Purity: > 95%

Purification Method: A combination of ion exchange, hydrophobic interaction and size exclusion chromatography.

Specificity: Binds to various subtypes of human interferon alpha

Due to the variation in ND₅₀ values based on cell type and assay system, we recommend each user determine the neutralizing concentration of this antibody lot in their assay system. In an A549/EMCV (cell/virus) assay system, variable results have been obtained for the antibody's ability to weakly neutralize the cytopathic inhibitory effect of human interferon alpha. Partial neutralization of various human interferon alpha subtypes has been observed in reporter gene assays.

Tested Applications: Direct Binding ELISA

Optimal dilutions should be determined by each laboratory for each application.

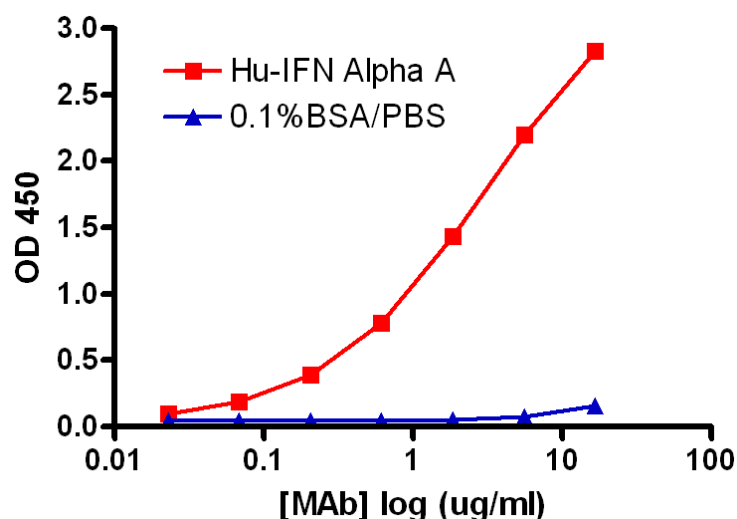


Figure 1. Representative binding curve of 21116-1 antibody to human interferon alpha A (square) and to 0.1% BSA/PBS (triangle) in a Direct Binding ELISA. Medium-binding polystyrene plates were coated with either 1 µg/ml human interferon alpha A or 0.1% BSA/PBS. Thereafter, titrations of the product were added to the wells. Goat anti-mouse IgG conjugated to HRP was used as the detection antibody. Colorimetric detection was performed using 3,3',5,5'-Tetramethylbenzidine (TMB) substrate. The HRP-TMB reaction was stopped using a diluted H₂SO₄ solution.

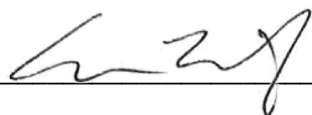


Shipping Conditions: Dry Ice

Physical State of Product During Shipping: Frozen

Storage Conditions/Comments: After receipt, the product may be stored at -20°C for short-term use (≤ 6 months). For long-term storage, we recommend storing the product at -70°C or below for retention of full activity. When thawing, the contents of the tube should be apportioned in separate tubes so that freezing and thawing is kept to a minimum. Re-freezing should be done on dry ice or in a dry ice/alcohol bath. Further dilution of the product should be in buffers containing protein such as 0.1% bovine serum albumin (BSA). For more information on protein handling, visit our Resource Library at www.pbl assaysci.com.

Authorization

Released by: _____


Date: August 27, 2024

Sold under license from Pestka Biomedical Laboratories, Inc. d/b/a PBL Assay Science. For research use only. Not for diagnostic or clinical use in, or administration to, humans. Not for resale in original or any modified form, including inclusion in a kit, for any purpose. Not for use in the preparation of any commercial product.